

Personal Use (PU)

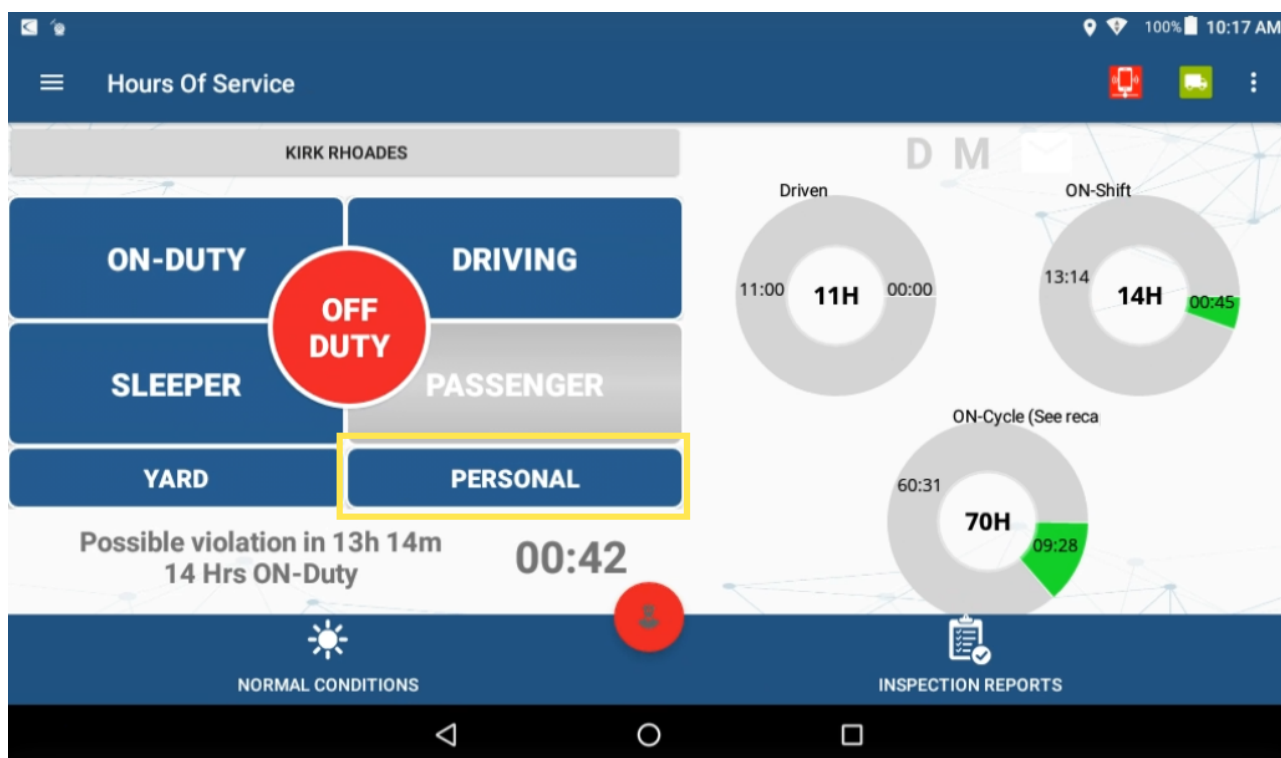
Per Federal Hours of Service §395, you are allowed to drive to the nearest rest area, drive home, and more. The ELD will prompt you to add a pre-defined remark or type a different reason when changing to Personal Use (PU) during vehicle operation.

► Selecting Personal Use (PU) Status:

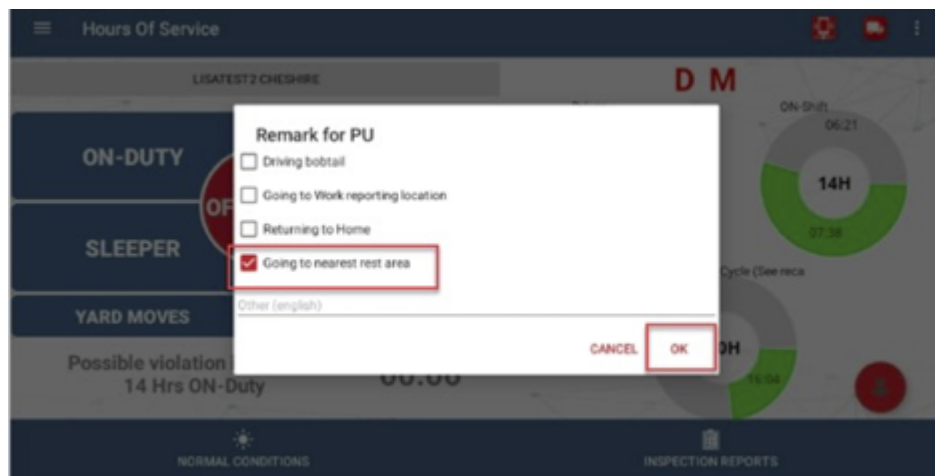
1. From the Home Screen, tap **Personal**.



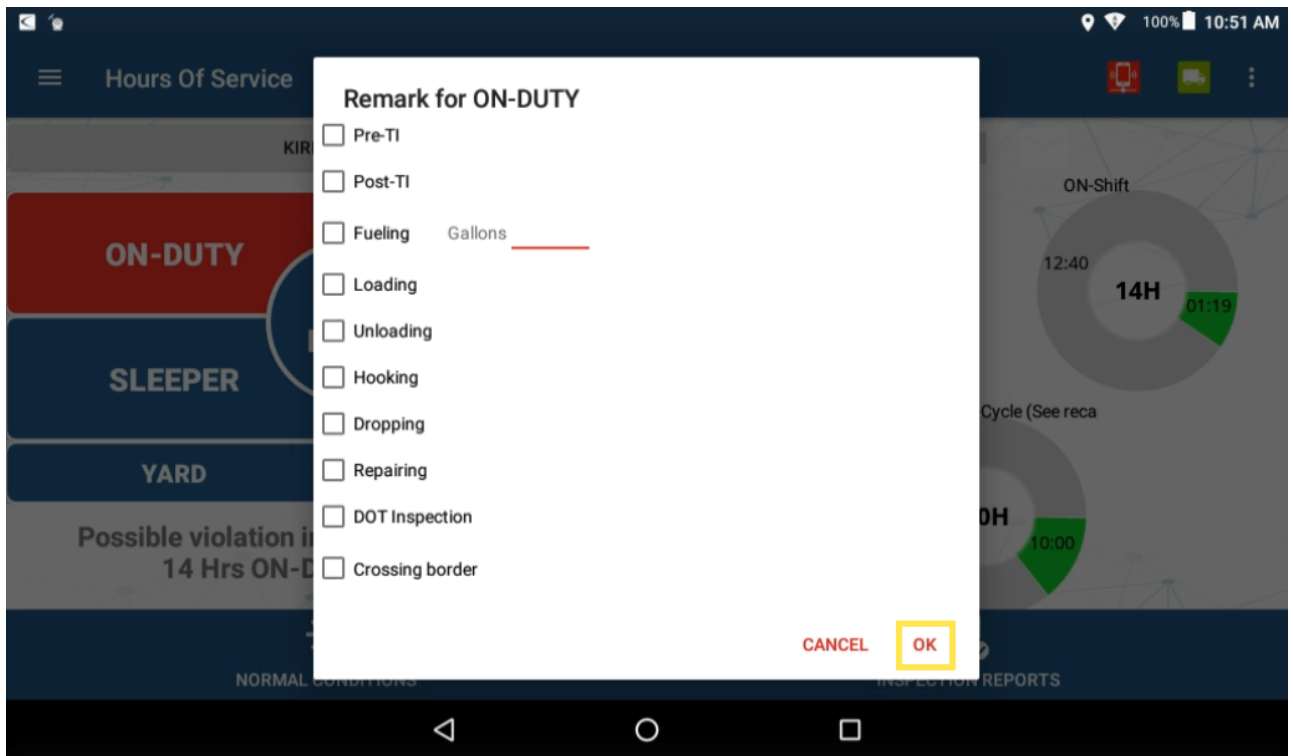
Note. DUTY status must be in OFF-DUTY.



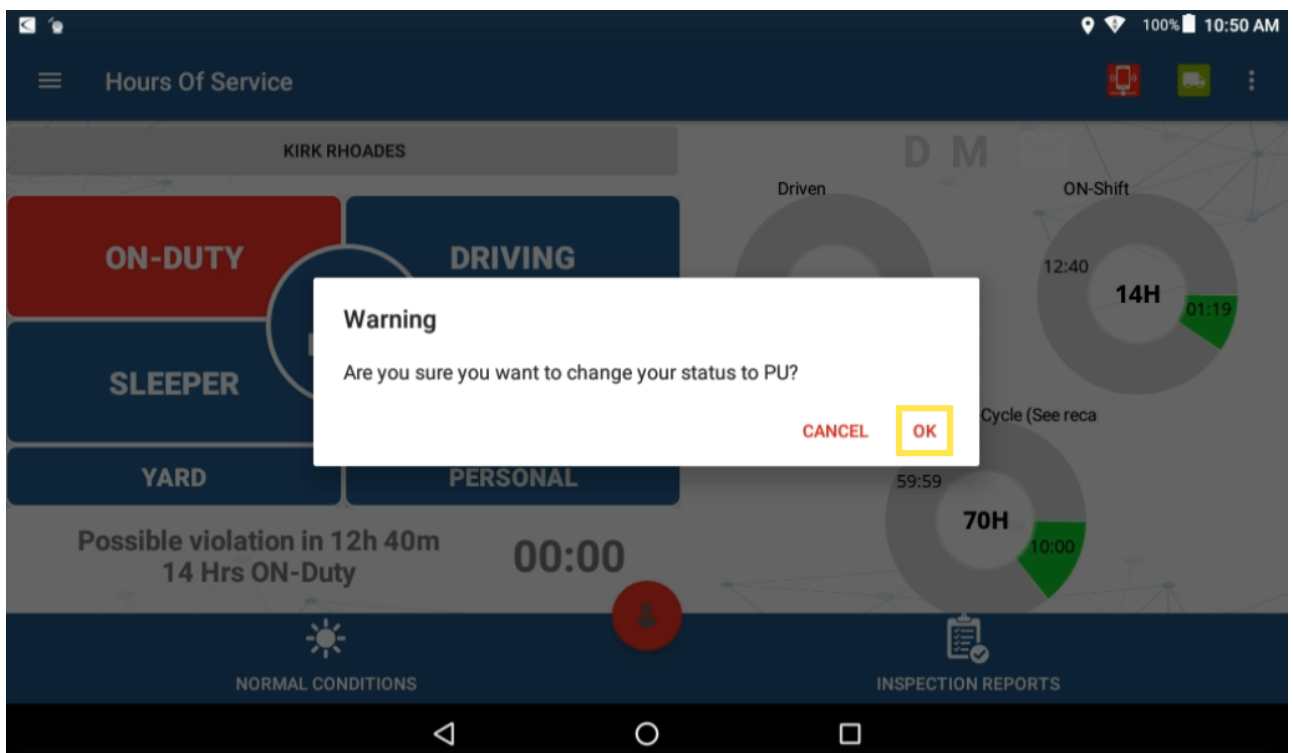
A warning pop-up appears to confirm you would like to change your status to Personal Use.



2. Tap **OK**.
3. The Remark for Personal Use pop-up appears, check a box (if applicable) or add a customized remark (this duty status **must** have a remark).



4. Tap **OK** to continue.



Your status is changed to Personal Use.



5. If there is an ignition-off event, you will be prompted to either exit or continue the Personal Use status upon ignition on.



The Log event for Personal Use will show up as a blue dashed line in the off duty portion of the graph.

Yard Move (YM)

The ELD also allows you to drive the vehicle inside a yard. To do so, switch to Yard Move (YM) before putting the vehicle in motion.

► Selecting Yard Move (YM) Status:

1. From the Home Screen, tap **Yard Moves**.

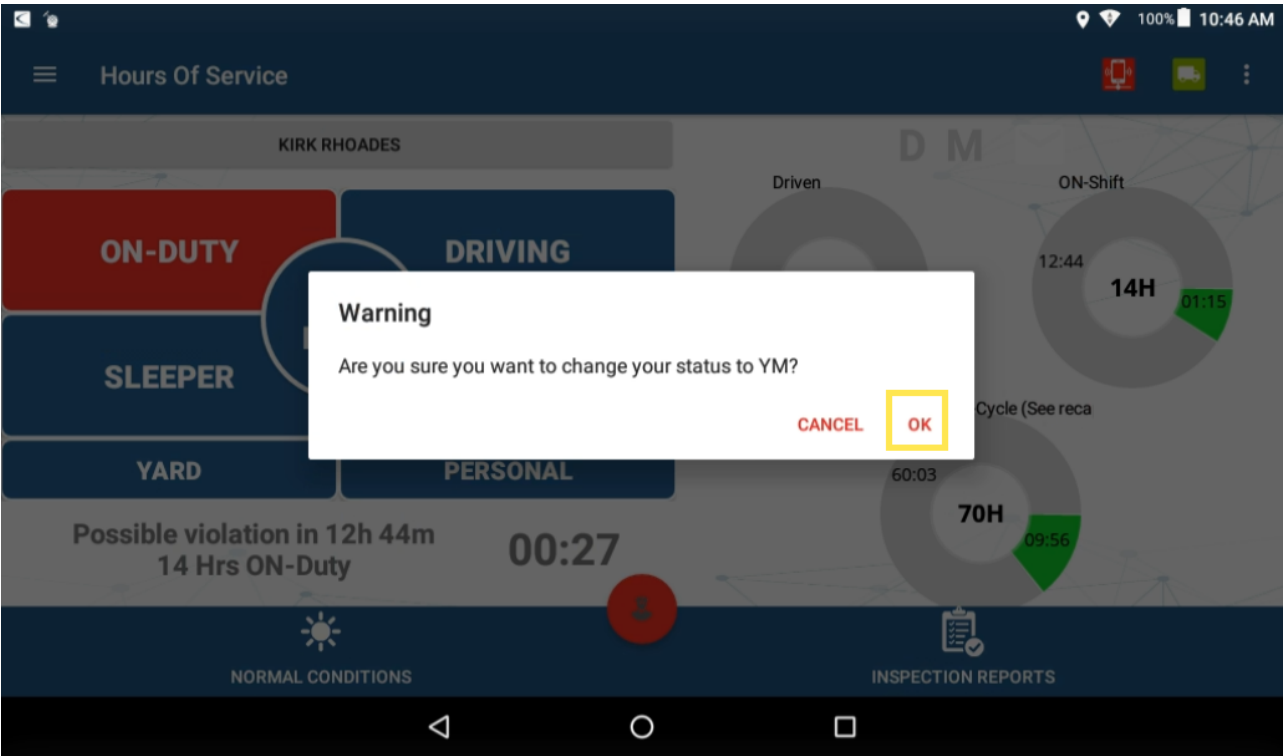


Note. Duty status must be in ON-DUTY status.

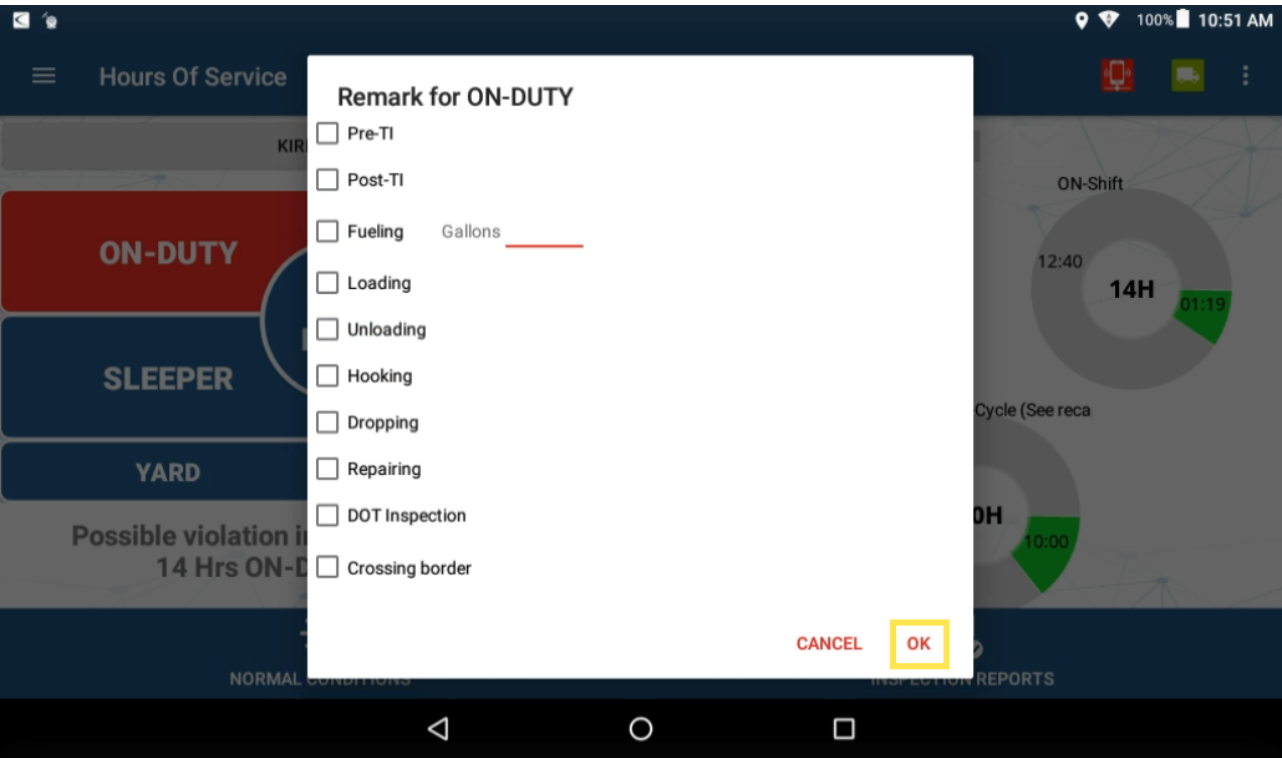


A warning pop-up appears to confirm you would like to change your status to Yard Move.

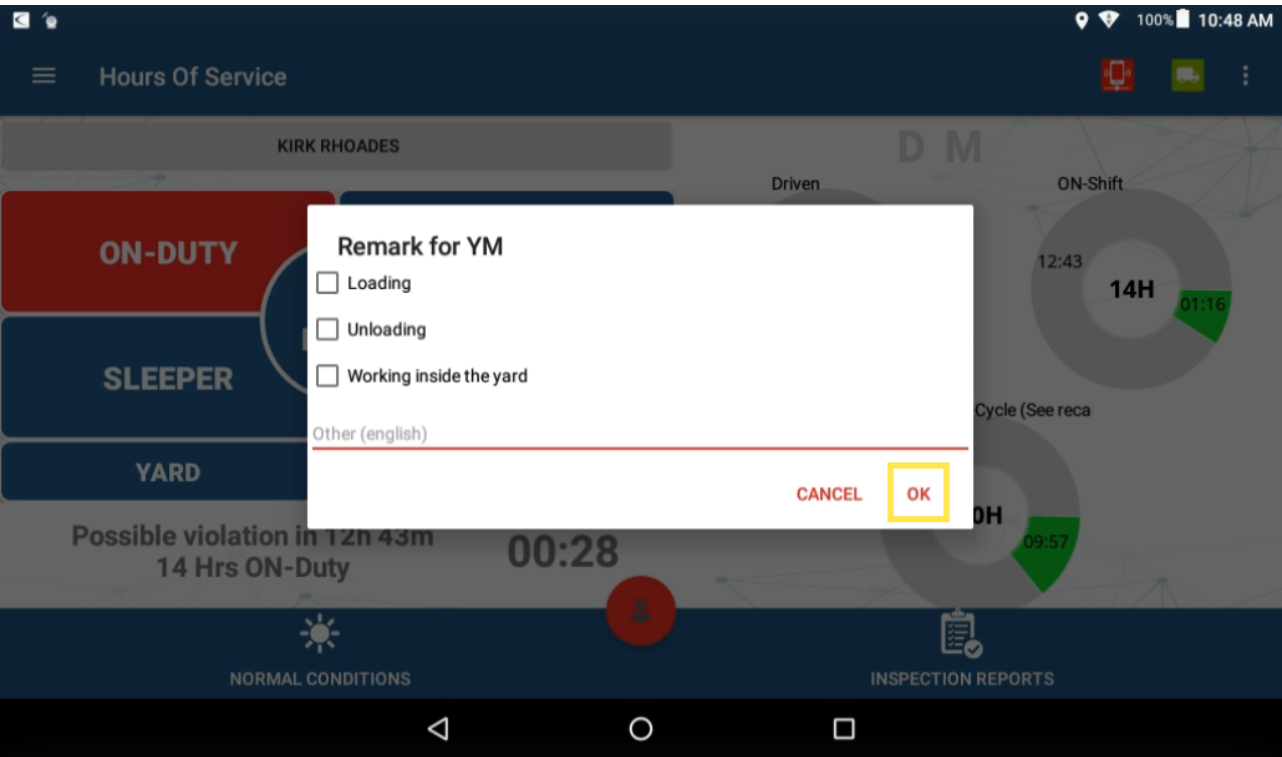
2. Tap **OK**.



3. The Remark for ON-DUTY pop-up appears, check a box (if applicable) and/or tap **OK** to continue.



4. The Remark for YM pop-up appears, check the applicable box or enter a remark on the Other line, then tap **OK**.




Your status is changed to Yard Moves.

Personal Use and Yard Moves

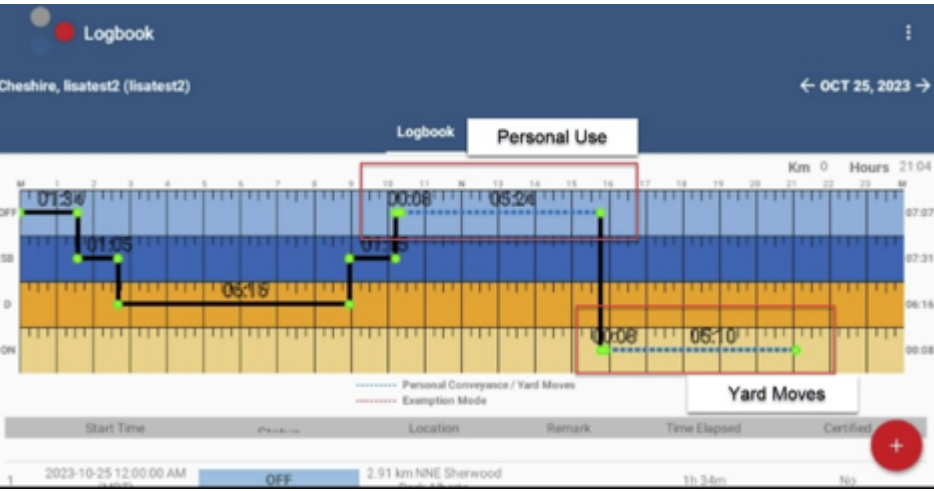
Link: <https://help.responsiblefleet.com/docs/eld-complete-driver-reference-guide/personal-use-and-yard-moves/> Last Updated: November 16th, 2022



 **Note.** If the vehicle's speed exceeds 32 km/h you will be automatically switched to Driving duty status.

PU and YM in the Logbook

Personal Use or Yard Move events are shown as a dashed blue line in the logbook graph.



The distance traveled while in PU and/or YM status is included in the daily odometer shown in the Logbook and the Print/Display option of the Portal.