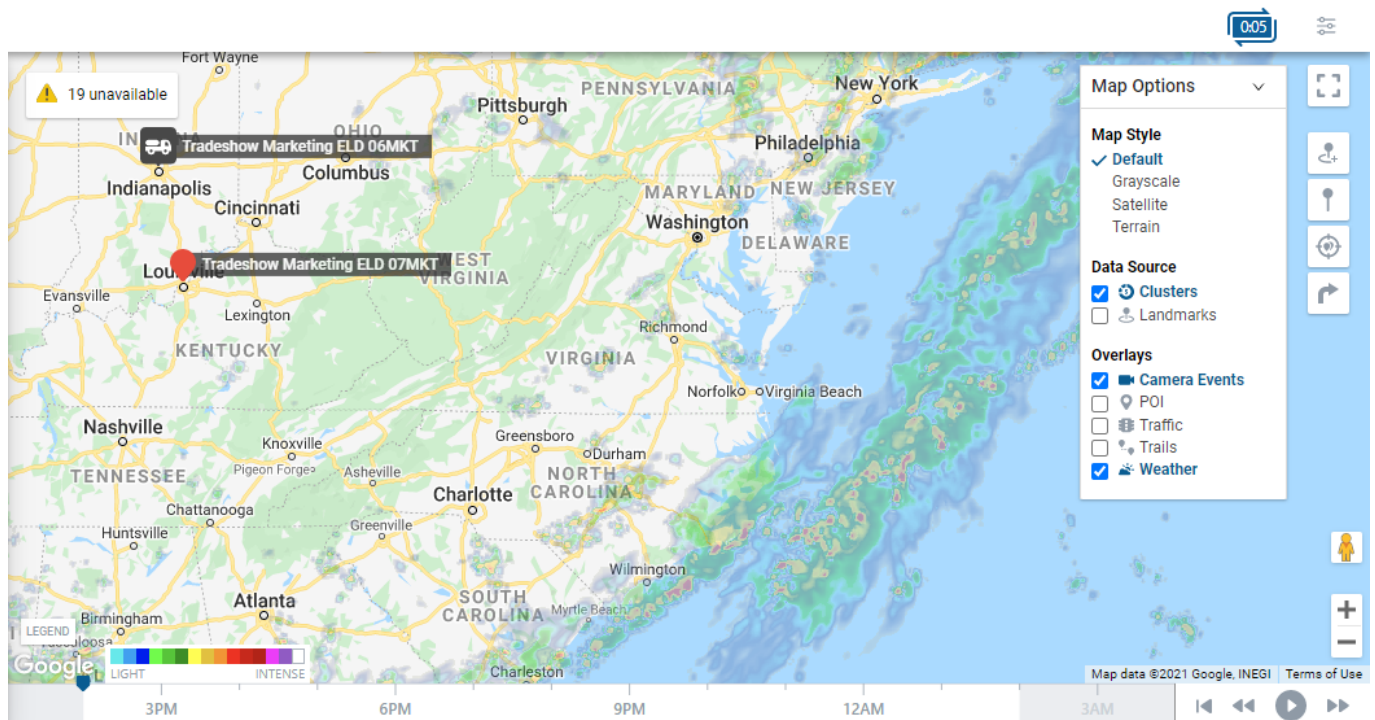


Use weather functions within the map to view the daily weather radar in your fleet's area.

## Weather Overlay

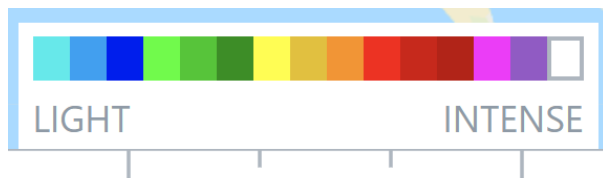
The Weather Overlay is a new map layer that allows you to view the current weather radar in your fleet's area. Simply click the Weather button in the Map Options dropdown menu to activate the radar.

- Daily weather is available 12 hours in advance.



## Legend

Once the weather feature is turned on, a color legend will appear showing light to intense weather severity.



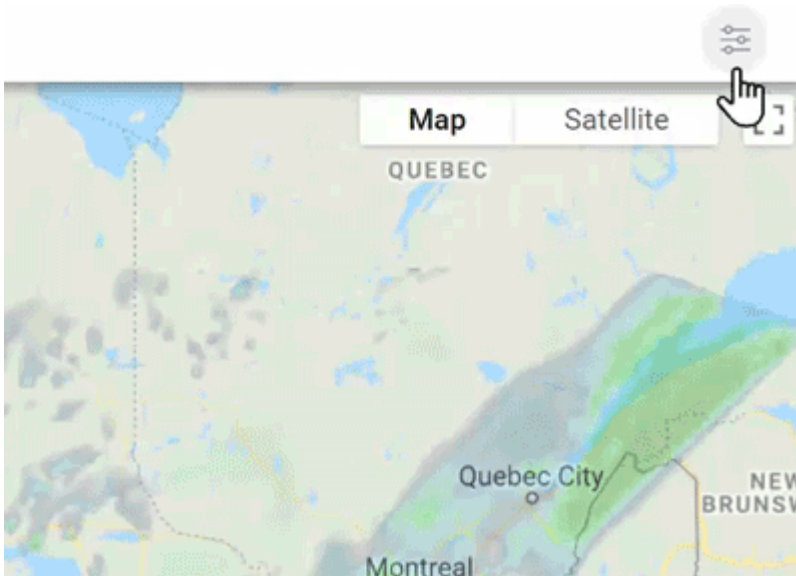
## Weather Playback

You can adjust weather playback using the playback controls featured at the bottom of the Map page window. Weather playback can be adjusted via the 12-hour timeline or the controls (e.g., Play, Rewind, Forward, Start Over) to the bottom right of the screen.



## Weather Opacity Preferences

You can manage your weather opacity preferences via Map Preferences. To do so, simply click the Preferences button on the right side of the screen, then adjust the opacity using the + and/or - buttons next to Weather Opacity.



**Note.** This Weather Forecast feature is unavailable on Internet Explorer, but current weather is still viewable.