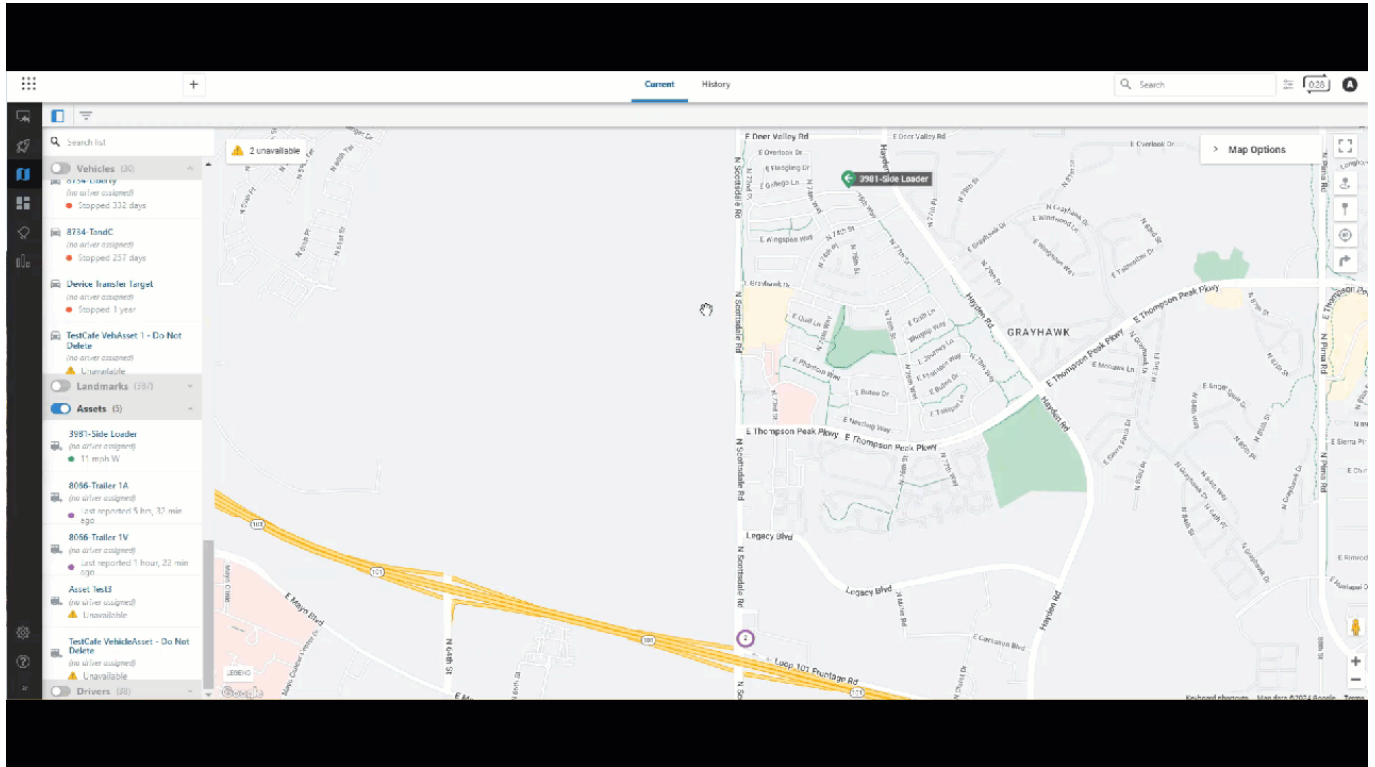


Use Trip History functions on the map to monitor your fleet's vehicle and asset activity to help determine job verification, efficient routing, vehicle incidents, and more.

Viewing Trip History

Trip History allows you to view your fleet's daily travel history on the map. You can view trip history for multiple vehicles and/or assets at the same time.

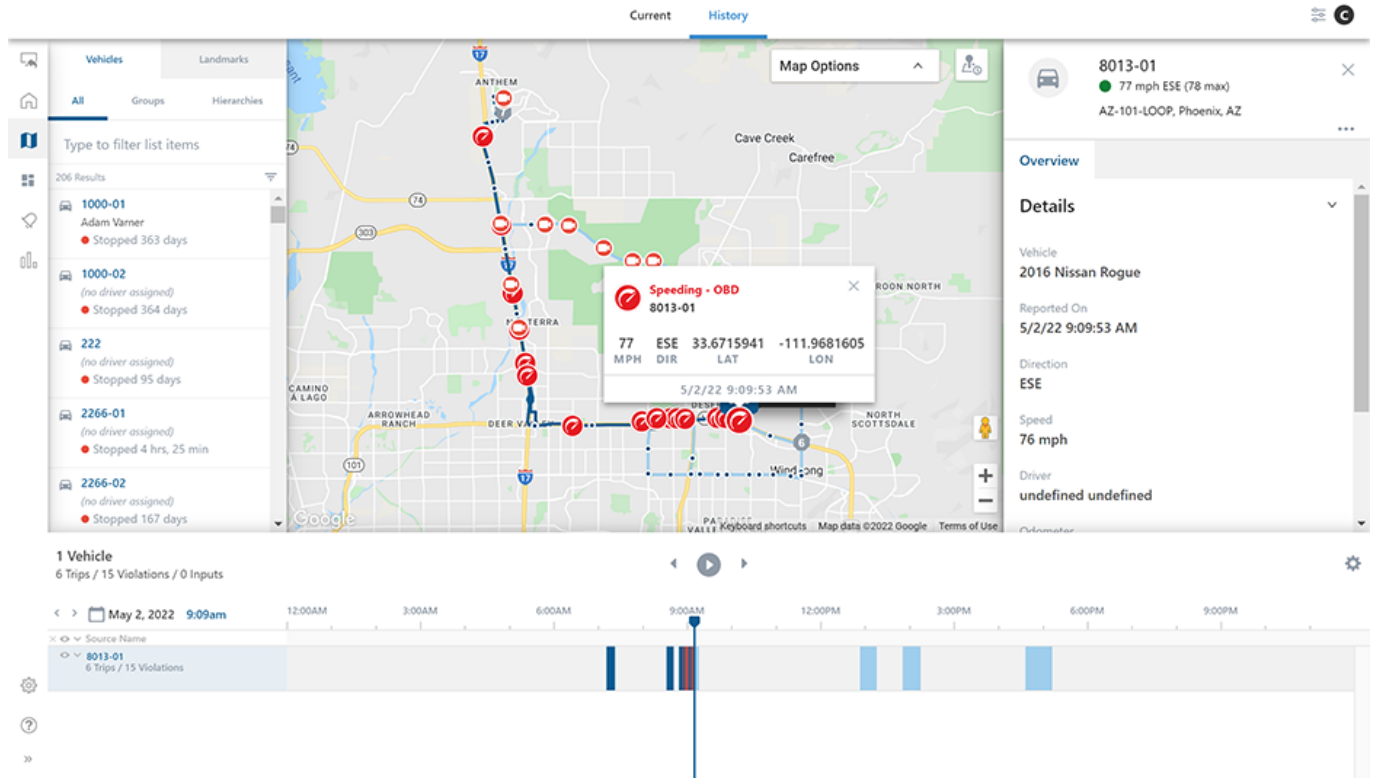


► To view trip history:

1. From the map, click the History tab.
2. Click on the vehicle(s) and/or asset(s) you would like to view.
The playback bar will appear at the bottom of the map with the selected vehicle(s) and/or asset(s) daily trip history.
3. Click the calendar button (📅) or date arrows to choose a specific date to view trip history.
4. If you would like to change the playback speed, click the Timeline Settings button (⚙️) in the right corner of the playback bar then click **Playback speed**. You can adjust the speed at: Normal, 2x, 4x, 8x, 16x and 32x.
5. You can also use the following toggle buttons available in Timeline settings to adjust the playback view: Keep selection in view, Show trips, and Snap to road.
6. Once selected, click the Play button (▶️) to playback the vehicle(s) and/or asset(s) trip history.

Viewing Violations

As part of trip history, you can also view driving violations related to specific trips.

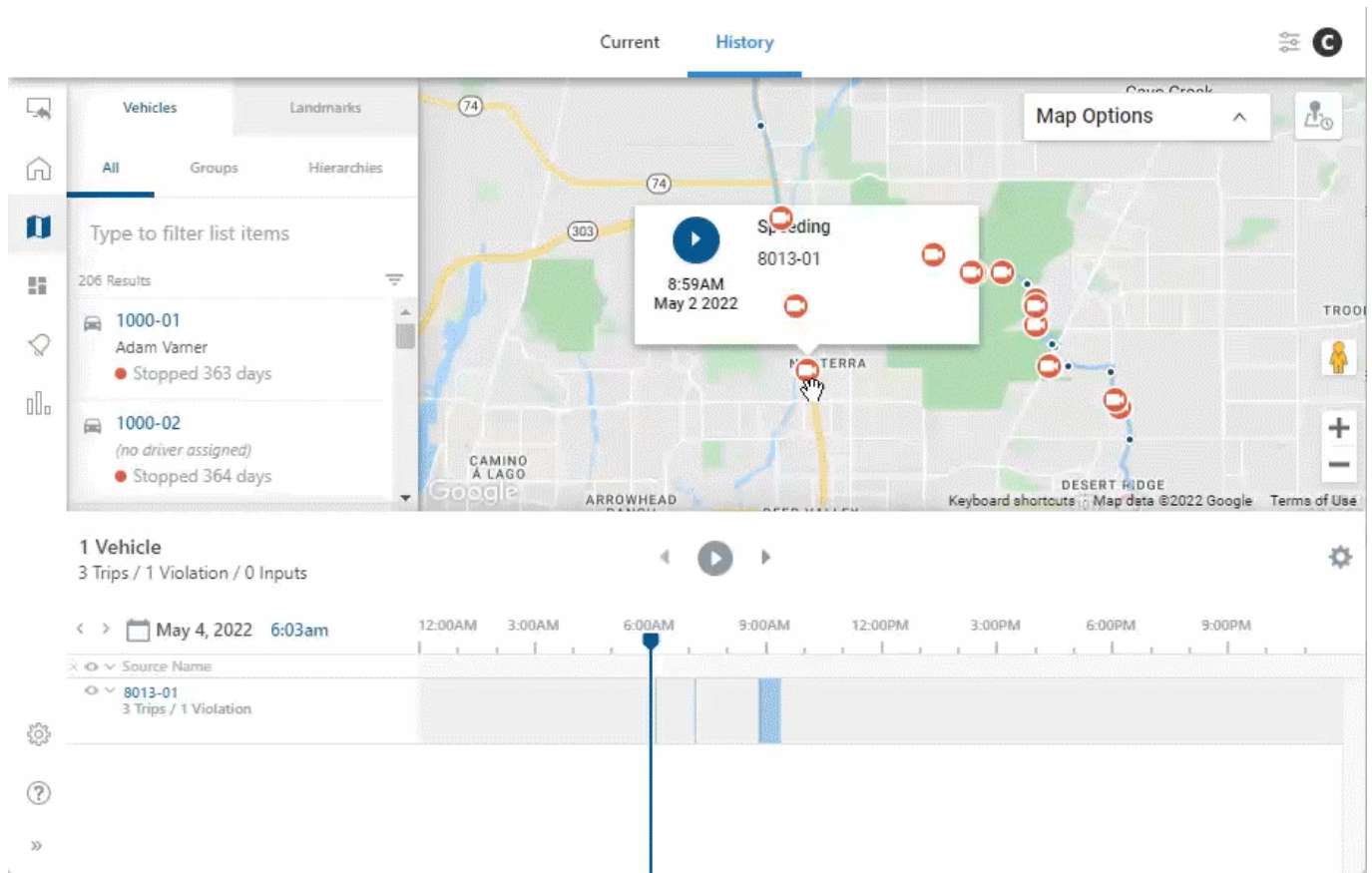


► Violations types include:

- Distracted
- Follow Distance
- Hard Acceleration
- Seatbelt
- Speeding
- Traffic Violations

Viewing Camera Events

If your organization includes cameras, you have access to camera events. Camera events give you insight into real-time triggered violation events.



► To view camera events:

1. From the map, click the History tab.
2. Click on the vehicle(s) you would like to view.
The playback bar will appear at the bottom of the map with the selected vehicle(s) daily trip history.
3. Click the calendar button (📅) or date arrows to choose a specific date to view trip history.
4. Once the selected trip history opens, enabled camera events will appear over the timeline.
5. From here, click on a camera event to view real-time video of when a violation occurred.