


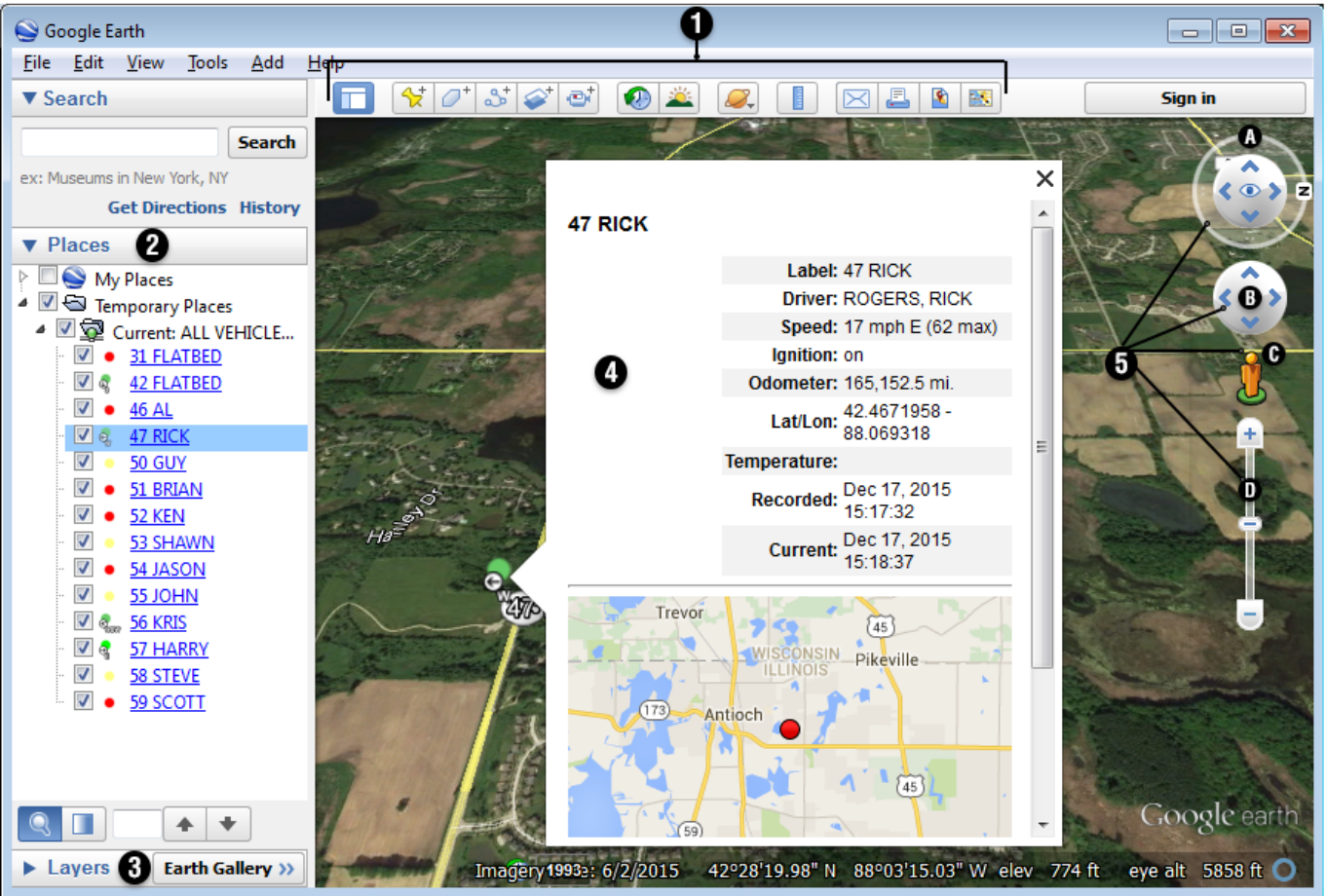
Using the 3D Current Map

Link: <https://help.responsiblefleet.com/docs/about-maps/using-3d-maps/using-the-3d-current-map/> Last Updated: April 11th, 2016

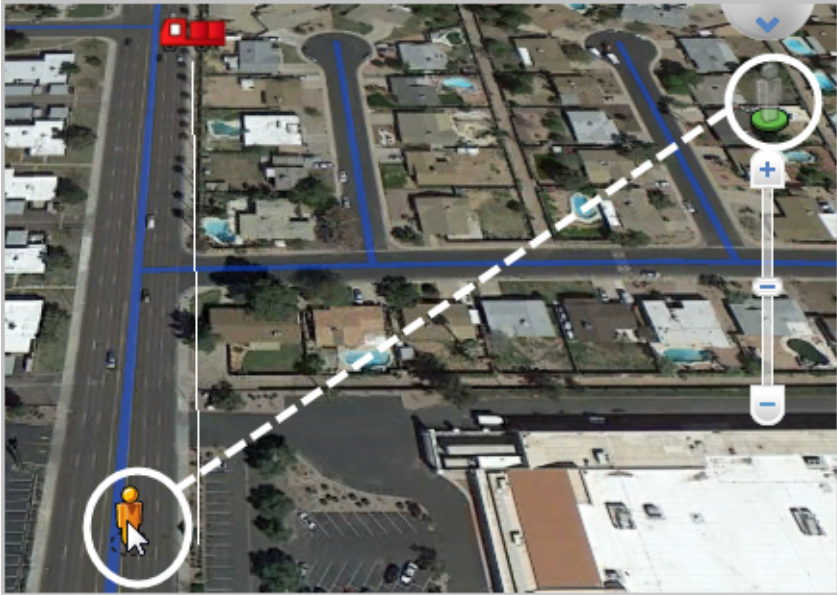

The 3D Current map shows current status of all vehicles or a selected vehicle group (current point only, 5 minute trail, 15 minute trail, 30 minute trail, full-day trail, or full-day trail with stops).


Tip! See [Using 3D Maps](#) to learn how to launch a 3D map from the portal.

The 3D Current map has the following features:



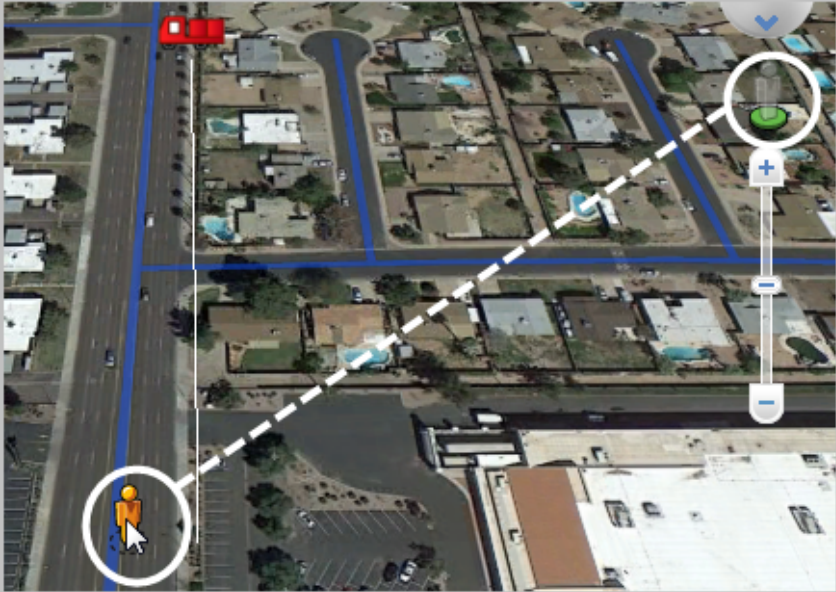

#	Option	Description
1	Toolbar Buttons	Refer to the Google Earth Help for using toolbar buttons.

#	Option	Description
2	Places Panel	<p>Locate, save, organize, and revisit places. When you run a 3D map from the portal, a new .kml file is downloaded to your computer and automatically loaded within Google Earth (represented by its own node in your “Temporary Places”). This node structure allows you to toggle on/off different places (.kml or .kmz files), layered within the same Google Earth window. The following example shows two separate places (3D mapping kml exports) for current “Phoenix” and “Mesa” vehicle groups:</p> <div></div> <div></div> <p>Vehicles under each node are listed in alphabetical order. Colors and shapes represent vehicle status and icons set in the portal. Clear/select check boxes to turn off/on individual vehicles. Click a vehicle from the list or from the map to load the vehicle information box. Double-click a vehicle from the list or map to zoom in and view the location at eye-level.</p>

#	Option	Description
3	Layers Panel	Display points of interest and additional layers from the Google Earth Gallery: Borders and Labels, Places, Photos, Roads, 3D Buildings, Ocean, Weather, Gallery, Global Awareness, or More. (The most typical layers to turn on are Roads, Borders and Labels, and Places. Turning on too many layers at once can make the map overwhelming.) Refer to Overlays to learn more about importing landmarks and/or overlays from Google Earth into the portal.
4	Vehicle Information Box	Also known as the Vehicle Card. Shows the selected vehicle's information, including vehicle label, driver (if available), movement status, ignition status, odometer, lat/lon, temperature (if available), recorded date, current date (updates automatically with the live mapping option). Select a vehicle from the Places Panel or by clicking an icon on the map.

Using the 3D Current Map

Link: <https://help.responsiblefleet.com/docs/about-maps/using-3d-maps/using-the-3d-current-map/> Last Updated: April 11th, 2016

#	Option	Description
5	Navigation Controls	<p>A) Tilt/Rotate Control Arrows: Click the appropriate arrow buttons or drag-and-drop your mouse around the outer ring to adjust the tilt or rotation of the view. Alternatively, hold the CTRL key down with the mouse wheel to rotate the map.</p> <p>B) Directional Control Arrows: Click the appropriate arrow buttons to move the view north, south, east, or west.</p> <p>C) Street View/Ground View: Drag the yellow pegman to a location on the map for street-level or ground-level imagery.</p>   <p>>D) Zoom / Slider: Click + or - to zoom in or zoom out, drag the zoom slider, or use the mouse scroll wheel. Zoom in and out with much better accuracy and control by holding the right mouse button down and dragging up and down. Additionally, double-clicking the right mouse button zooms you out a convenient amount, just like left double-clicking zooms you down a convenient amount. Click Tools > Options > Navigation to adjust the default fly-to and mouse wheel speeds.</p>